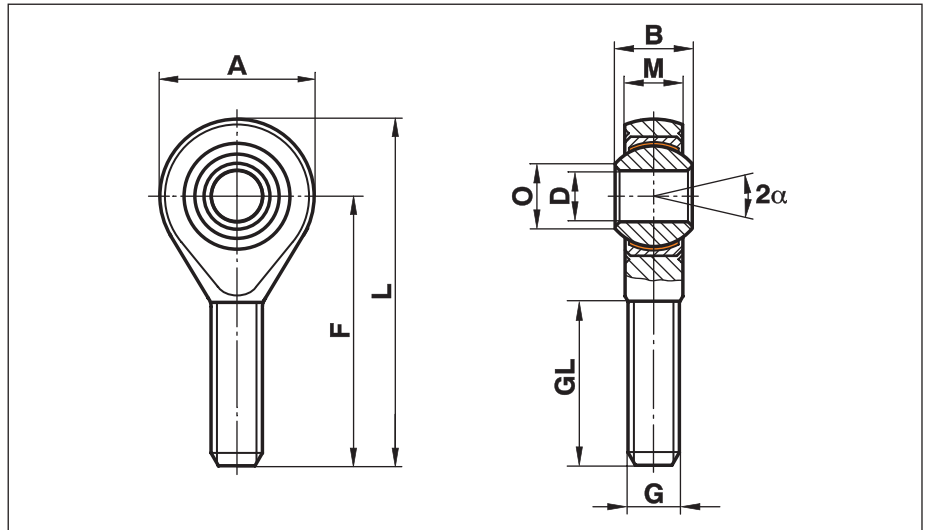


# Rod Ends Motor Sport Maintenance Free

## Series GAXSW..MS

Rod Ends with male thread made from heat-treated steel, nickel plated with PTFE-liner, maintenance free. Preloaded bearing

For use at highest dynamic pressure and tension loads in corrosive environments



Description	DH7	B	M	A	F	L	O	G	GL	static radial load C <sub>0</sub> kN	dynamic radial load C <sub>0</sub> kN	torque N/dm	α	weight g
GAXSW 6 MS	6	9	6,75	20	36	46	8,9	M 6x1	21	9,8	9,8	4-10	13°	20
GAXSW 8 MS	8	12	9,00	24	42	54	10,4	M 8 x1,25	25	19,5	19,5	4-12	14°	33
GAXSW 8x1 MS	8	12	9,00	24	42	54	10,4	M 8 x1	25	19,5	19,5	4-12	14°	33
GAXSW 10 MS	10	14	10,50	28	48	62	12,9	M 10x1,5	28	31,4	28,1	6-16	13°	56
GAXSW 10x1,25 MS	10	14	10,50	28	48	62	12,9	M 10x1,25	28	31,4	28,1	6-16	13°	56
GAXSW 10x1 MS	10	14	10,50	28	48	62	12,9	M 10x1	28	31,4	28,1	6-16	13°	56
GAXSW 12 MS	12	16	12,00	32	54	70	15,4	M 12x1,75	32	42,0	38,4	10-22	13°	87
GAXSW 12x1,5 MS	12	16	12,00	32	54	70	15,4	M 12x1,5	32	42,0	38,4	10-22	13°	87
GAXSW 12x1,25 MS	12	16	12,00	32	54	70	15,4	M 12x1,25	32	42,0	38,4	10-22	13°	87
GAXSW 14 MS	14	19	13,50	36	60	78	16,8	M 14x2	38	57,0	50,5	12-24	16°	129
GAXSW 14x1,5 MS	14	19	13,50	36	60	78	16,8	M 14x1,5	38	57,0	50,5	12-24	16°	129
GAXSW 16 MS	16	21	15,00	42	66	87	19,3	M 16x2	40	67,0	63,0	14-28	15°	189
GAXSW 16x1,5 MS	16	21	15,00	42	66	87	19,3	M 16x1,5	40	67,0	63,0	14-28	15°	189
GAXSW 18 MS	18	23	16,50	46	72	95	21,8	M 18x1,5	44	81,5	76,5	18-32	15°	267
GAXSW 20 MS	20	25	18,00	50	78	103	24,3	M 20x1,5	47	93,5	93,5	20-34	14°	348
GAXSW 25 MS	25	31	22,00	60	94	124	29,6	M 24x2	58	135,0	135,0	34-52	15°	600

## Rod Ends with reduced bore:

Description	DH7	B	M	A	F	L	O	G	GL	static radial load C <sub>0</sub> kN	dynamic radial load C <sub>0</sub> kN	torque N/dm	α <sup>1)</sup>	weight g
GAXSW 10.8 MS	8	14	10,50	28	48	62	12,9	M 10x1,5	28	31,4	28,1	6-16	13°	56
GAXSW 12.10 MS	10	16	12,00	32	54	70	15,4	M 12x1,75	32	42,0	38,4	10-22	13°	87
GAXSW 14.12 MS	12	19	13,50	36	60	78	16,8	M 14x2	38	57,0	50,5	12-24	16°	129
GAXSW 16.14 MS	14	21	15,00	42	66	87	19,3	M 16x2	40	67,0	63,0	14-28	15°	189
GAXSW 18.16 MS	16	23	16,50	46	72	95	21,8	M 18x1,5	44	81,5	76,5	18-32	15°	267

## Materials:

**Housing:** Heat-treated steel to 42CrMo4, Aisi 4140, forged, polished, nickel plated with high polish finish

**Insert:** Stainless steel to 1.4571, Aisi 316Ti with PTFE liner bonded to the inner surface

**Ball:** Bearing steel to 100Cr6, Aisi 52100, hardened, ground, polished, hard chrome plated on the running surface

**Clearance:** preloaded, zero tolerance

**On request:** with left hand thread, threaded bolt and further sizes are available

<sup>1)</sup> The reduced bore diameter offers to the engineer the possibility to construct a bearing with a very high pivoting angle, especially when a minimal shaft collar is used (in some cases twice as high as standard listing).